

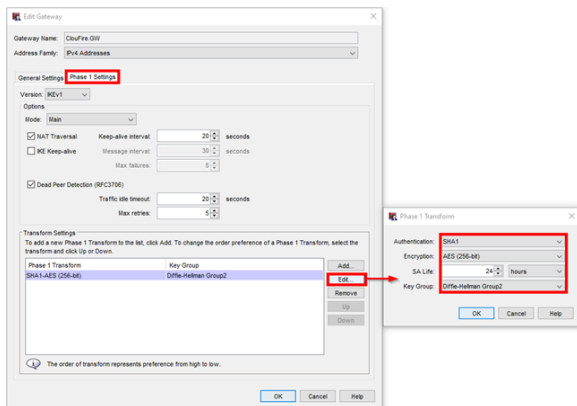
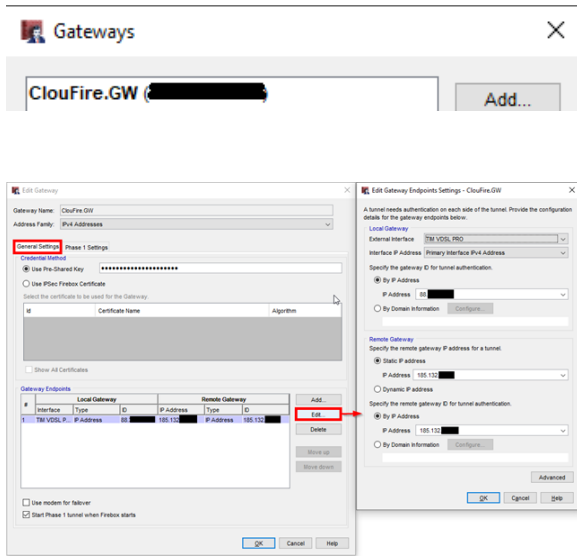
VPNaaS - Watchguard Firewall

Introduzione

Configurazione Watchguard presso cliente per attivazione tunnel con servizio VPNaaS Cloudfire.

Guida passo-passo

1 Definizione Gateway: VPN Branch Office Gateways



2 Definizione Tunnel: VPN Branch Office Tunnels



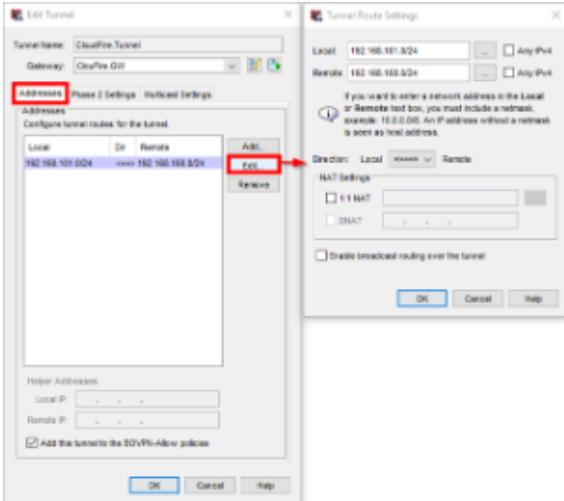
Sommario

- [Introduzione](#)
- [Guida passo-passo](#)

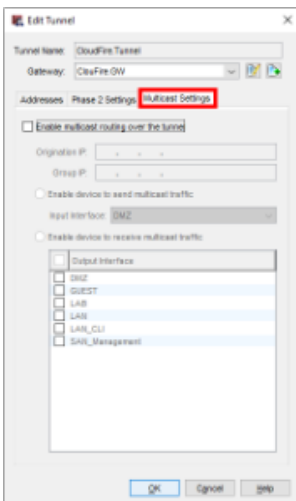
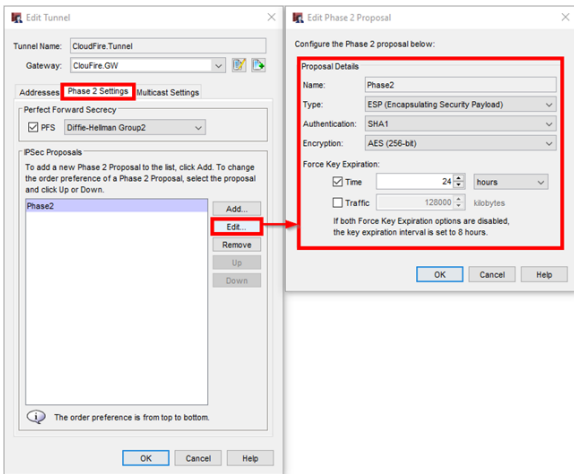
Articoli collegati

Content by label

There is no content with the specified labels



Personalizzare i "Phase 2 Settings" poichè la configurazione di default non è corretta:



3Al termine della configurazione vengono create 2 regole che consentono tutto il traffico Da e Verso il tunnel Cloudfire (N.B. di default non è attivo il logging)

| Order / | Action | Policy Name | Policy Type | From | To | Port |
|---------|--------|----------------|-------------|------------------|-----|------|
| 82 | ✓ [U] | BOVPR-Allow in | Any | CloudFire Tunnel | Any | Any |

CloudFire Srl
 Via F.lli Cervi 87/b
 42124 Reggio Emilia RE
 P.IVA/CF: 0276700353

T: +39 0522 17534
 F: +39 0522 1753490
 info@cloudfire.it
 cloudfire@legalmail.it

| Order / | Action | Policy Name | Policy Type | From | To | Port |
|---------|--------|-----------------|-------------|------|------------------|------|
| 8 | ✓ (1) | BOVPR-Allow.out | Any | Any | CloudFire Tunnel | Any |